

PRESTON / SETON / GOSFORD
R E G E N E R A T I O N



Bath House, Prestongrange



Cockenzie CARS



Preston Tower



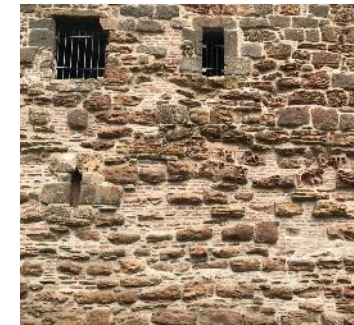
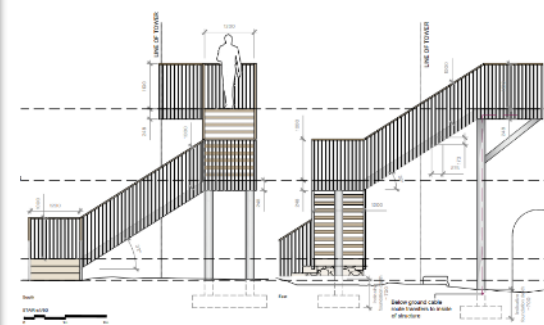
Circa 1450



Circa 1560

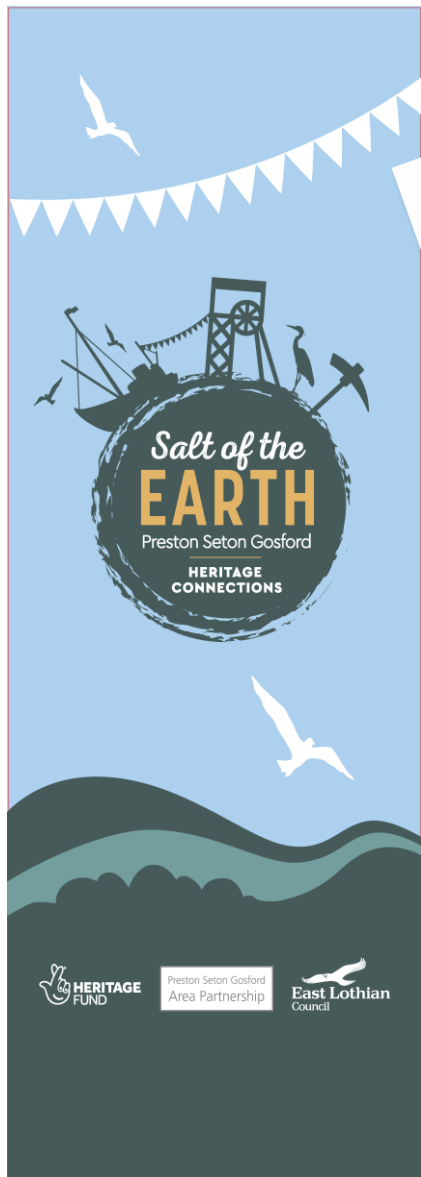


Circa 1650





Cockenzie House & Gardens – Claret Tower



MEMORY MAP COMPETITION

PRESTON, SETON, GOSFORD & FA'SIDE

During this unprecedented time we're all using our places differently and perhaps seeing them in a new light. We'd love to see how young people are viewing, exploring and experiencing their local areas.

- Document your memories of the past couple of months. What has been different? What do the streets look like? What has been particularly memorable?
- What have been your favourite places to walk to and explore? What places and buildings have you found interesting?
- Be creative - you can make your map using anything from computers, crayons and paints to paper and stickers. Make a map of your town or just your street - anything is permitted!
- The competition is open to children up to age 18 based in Preston, Seton, Gosford and Tranent/A' side.
- Winning entries will receive a bundle of goodies including art supplies, outdoor exploration guides and a book. The winning maps will be displayed in the Port Seton Centre.
- Email entries by 01/11/20 with your name, age and a contact number or email address to regeneration@eastlothian.gov.uk or drop off/mail to the Port Seton Centre, EH32 0BQ (for attention of Daniel).

INSPIRATION FOR THIS COMPETITION

Get an idea of the layout of the streets and roads

People looking at your map to identify the streets

Map, or write down your memories

Remember that prizes will be awarded and skill level

Representatives will be a name, age and

Kept solely for

for our full

East Lothian Council

Conservation Area Regeneration Scheme

Salt of the EARTH

Preston Seton Gosford

HERITAGE CONNECTIONS

Walk the Walk!

EVERYONE WELCOME!

Longniddry to Prestonpans Sunday 30th June
Longniddry Station 10.30am to Prestongrange Museum for Picnic and Celebrations at 4pm

A community heritage walk along the coastline including a few stops for others to join, with local experts talking about the wonderful heritage and natural treasures of the coastal area.

Final stop Prestongrange Museum at 4pm for a Community Picnic and Music to celebrate the official launch of our new community heritage project.

In the event of bad weather the Project Launch will take place at Cockenzie House Gardens Marquee at 4pm

HERITAGE FUND

Contact Jill to book your place and for further details jid@resnes@eastlothian.gov.uk (07969539707) or just come along

Salt of the EARTH

Preston Seton Gosford

HERITAGE CONNECTIONS

What's in it for you?

Go to the Salt of the Earth Briefing Session
Preston Town Hall Monday 17th June 7-9pm

For a cultural group or organisation who could benefit from other local groups, learning skills, potential funding for your old, new or established...

What's in it for you?

HERITAGE FUND

Community Heritage Fund

Heritage: Your Choice

Community Heritage Fund is an exciting opportunity for the Cockenzie & Port Seton and Longniddry to put the inequalities in our community

WHAT?

For Heritage Projects in your communities: Awards between £100 and £1000

HOW?

Communities will vote on winning projects

Applications Open - 09th September 2020

Criteria checking - 01st - 04th November

Project funding - 04th - 08th November

Project start - 14th November

Meeting in Community Centres - week of 22nd November

Decision Day and final Voting Event - 5th December (TBC)

COMMUNITY HERITAGE FUND

Heritage: Your Choice

Community Heritage Fund is an exciting opportunity for the Cockenzie & Port Seton and Longniddry to put the inequalities in our community

WHAT?

For Heritage Projects in your communities: Awards between £100 and £1000

HOW?

Communities will vote on winning projects

Applications Open - 09th September 2020

Criteria checking - 01st - 04th November

Project funding - 04th - 08th November

Project start - 14th November

Meeting in Community Centres - week of 22nd November

Decision Day and final Voting Event - 5th December (TBC)



Salt of the Earth





Salt of the EARTH
Preston Seton Gosford
HERITAGE CONNECTIONS

Walk the Walk!
EVERYONE WELCOME!

Longniddy to Prestonpans Sunday 30th June
Longniddy Station 10.30am to Prestongrange Museum for Picnic and Celebrations at 4pm

A community heritage walk along the coastline including a few stops for others to join, with local experts talking about the wonderful heritage and natural treasures of the coastal area.

Final stop Prestongrange Museum at 4pm for a Community Picnic and Music to celebrate the official launch of our new community heritage project.

In the event of bad weather the Project Launch will take place at Cockenzie House Gardens Marquee at 4pm

HERITAGE FUND

Walk the Walk!

Prestonpans

The town of Prestonpans began in the 12th century when the monks from nearby Newbattle Abbey came to make salt.

Before the monks came, there was a fishing hamlet called Althamer. Over the centuries, Althamer or Althamer became Salt Preston and spread along the shore. The shoreside clusters of houses and industries merged with Preston Village and other neighbouring settlements. The name Preston had developed from Prais Town, named after the Newbattle monks. Prestonpans, as we know it today, became a burgh in 1885.

For a long time, the town of Prestonpans was on the main route between Edinburgh and England. The mild climate, fertile soil and thriving industry, including coal mining and salt pans, offered opportunities to acquire great wealth. The towns Harbour, Morison's Wharf, became one of the busiest in the country for many years.

The shore and the John Muir Way

Prestonpans High Street **Prestonpans War Memorial**

Prestonpans Shore

The town of Prestonpans began on the shore of the Firth of Forth in the 12th century. Monks from nearby Newbattle Abbey began to make salt here, in what was then the fishing hamlet of Althamer.

Over the centuries, Prestonpans grew. The towns Harbour, Morison's Wharf, became one of the busiest industrial ports in Scotland to rival Leith Harbour for importance in international trade.

All along this part of the shore, if you look closely, you can find clues from the past. Here you can see the remains of the fishing community that once thrived and the workers from the coal mines, back working, trading, drinking and enjoying other industries.

Salt making
Salt was extremely valuable for preserving food before refrigeration. Salted meat, tanned leather and cabinet bearings were exported from Scotland all over Europe. As the industry's height in 19th, there were a salt workers in this area but, by 1901 only one was left.

Scottish salt salt pans closed in Prestonpans in 1985.

Salt water was also used for its health benefits. As a child, the Walker family was brought to Prestonpans to a village to battle the sea water.

The quiet, peaceful coastline of Prestonpans is best enjoyed. As a result, it attracts a number of species that may not be found elsewhere. The area is rich in bird watching birds, sea stacks, gullies and seals. The coastline is a bird, fish and porpoise site.

The quiet, peaceful coastline of Prestonpans is best enjoyed. As a result, it attracts a number of species that may not be found elsewhere. The area is rich in bird watching birds, sea stacks, gullies and seals. The coastline is a bird, fish and porpoise site.

This large rock used to balance on Godie Rocks, not far from here. It is known as Johnnie Rock. Legend offers a large man who worked as a barman at a barman's shop in the 17th century.

The rock was probably brought here by sea. An Age glacier and remained balanced there for 2,000 years. It was finally toppled by a storm in 1846 and knocked down again in a storm in 1901.

You can still see the rock at low tide.



PRESTON, SETON, GOSFORD HERITAGE WALKS

Three interlinked walks exploring natural heritage, coastal conservation, history and industrial heritage.

PRESTONPANS

Length: 2.5 miles (4 km) including the extension to Salt Preston

- From the start of the walk, follow the extension to Salt Preston.
- Continue along the shore to the John Muir Way.
- Continue along the shore to the John Muir Way.
- Continue along the shore to the John Muir Way.

LONGNIDDY

Length: 2.5 miles (4 km) including the extension to Salt Preston

- From the start of the walk, follow the extension to Salt Preston.
- Continue along the shore to the John Muir Way.
- Continue along the shore to the John Muir Way.
- Continue along the shore to the John Muir Way.

Go Jauntly

Have a fantastic you.

Experience this walking route on your walking app for adventures.

and own a pocket-sized

GET THE APP

Prestonpans to Waggonway
East Lothian, Scotland

by saltoftheearth

1hr 30m / 3.5km ☆ 6

A walk through the battlefields of Prestonpans, up the Waggonway and into the harbour town of Cockenzie.

GET IT ON Google Play



Prestonpans Heritage Interpretation





Prestonpans Civic Square – Phase 1&2 (War Memorial Square)



Prestonpans Civic Square – Phase 3 (Lower Square)

Since 2019/20 over £4.5MILLION external funding has been secured through Economic Development Team for regeneration projects in Preston / Seton / Gosford.

Town Centre Fund + Regeneration Capital Grant Fund + Place Based Investment Programme
UK Shared Prosperity Fund + Conservation Area Regeneration Scheme + Great Places Scheme



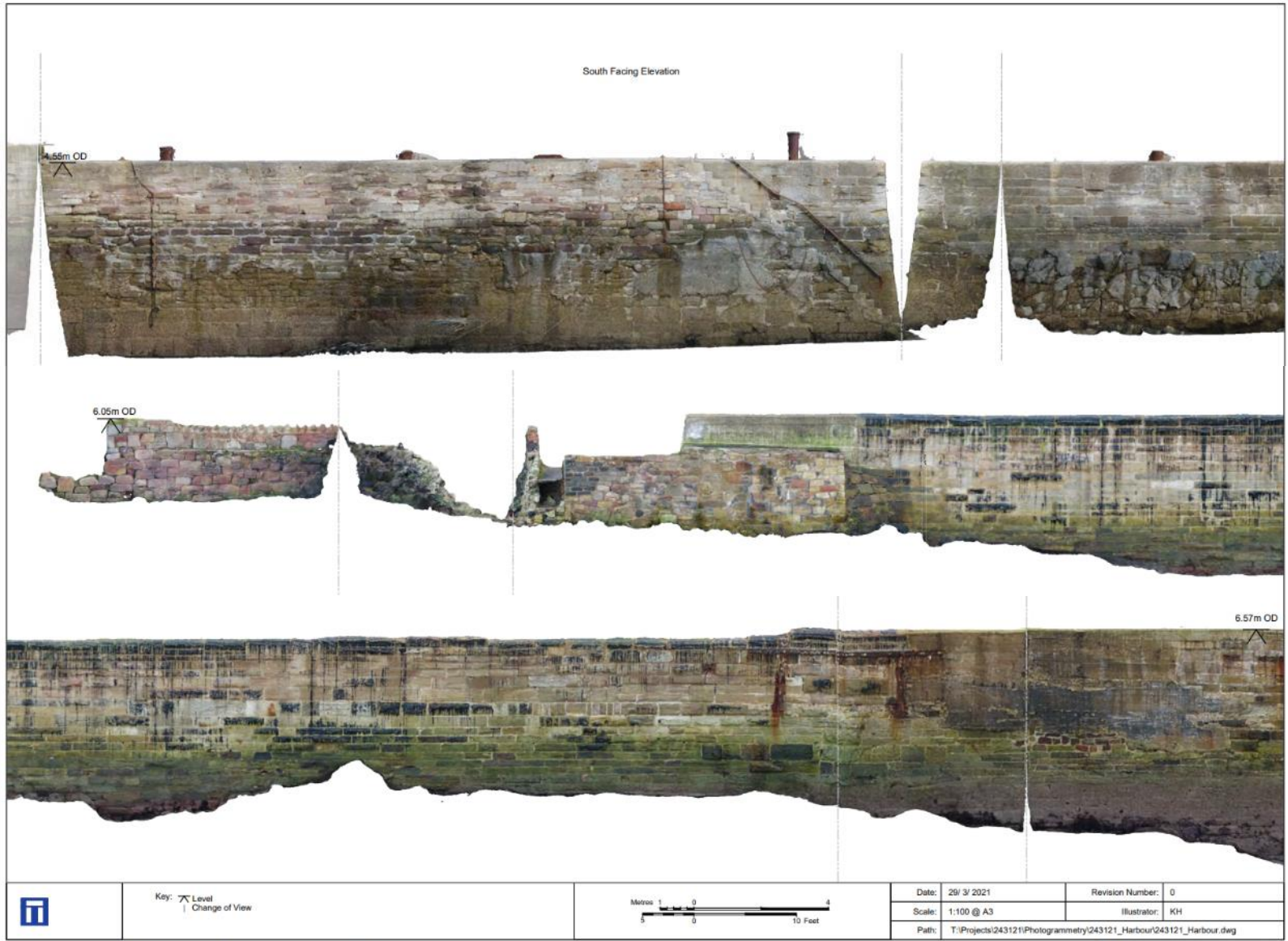
PRESTON / SETON / GOSFORD

R E G E N E R A T I O N

What's Next?



Harlawhill House, Prestonpans



Orthorectified image of north facing elevation of eastern arm of harbour (1/2)



Figure 8

Cockenzie Harbour



Shopfront Study, Prestonpans



Former Cockenzie Power Station Site

PRESTON / SETON / GOSFORD
R E G E N E R A T I O N